

MICROZONAZIONE SISMICA

Carta di microzonazione sismica

FA SA 0,1-0,5 s 1/2

scala 1:5.000

Regione Emilia-Romagna

Comune di Cavriago




Regione
Emilia-Romagna


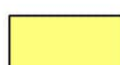
Soggetto realizzatore

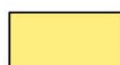
Direttori tecnici:
Dr. Geol. Carlo Caleffi
Dr. Geol. Francesco Cerutti
Dr. Geol. Matteo Baisi
Dr.ssa Olga Brontesi
Dr. Geol. Alessandro Ferrari
Dr.ssa Geol. Melinda Raimondo


Data
Aprile 2025

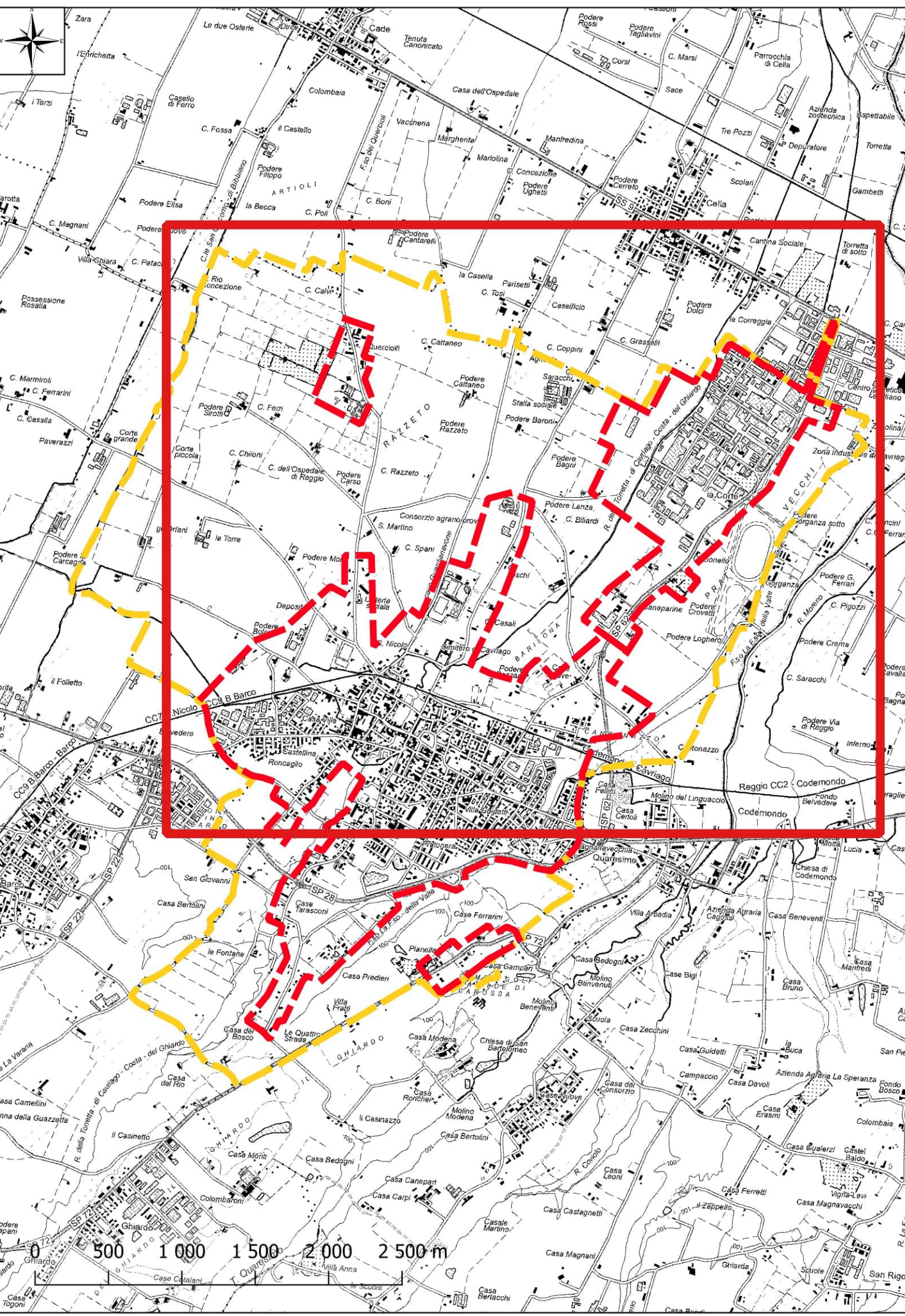
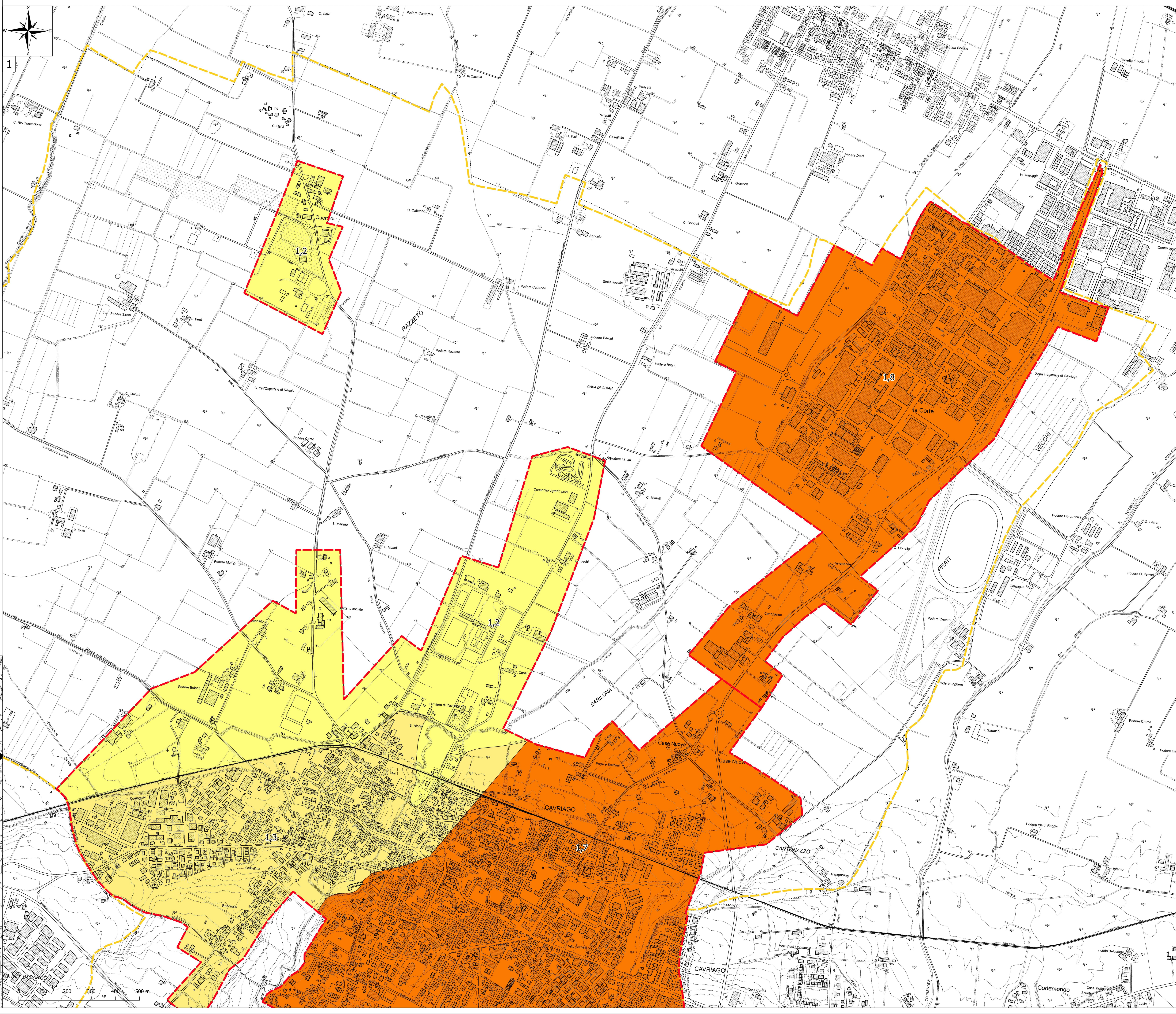
MS3

- Legenda
-  Confine comunale

 Aree oggetto di Microzonazione Sismica
- Zone stabili suscettibili di amplificazioni locali
-  FA-SA 0,1-0,5 s = 1,1 - 1,2

 FA-SA 0,1-0,5 s = 1,3 - 1,4

 FA-SA 0,1-0,5 s = 1,7 - 1,8




MICROZONAZIONE SISMICA


Carta di microzonazione sismica

FA SA 0,1-0,5 s 2/2
scala 1:5.000

Regione Emilia-Romagna
Comune di Cavriago



Regione
Emilia-Romagna


Soggetto realizzatore

Direttori tecnici:
Dr. Geol. Carlo Caleffi
Dr. Geol. Francesco Cerutti


Data
Aprile 2025

MS3


Dr. Geol. Matteo Baisi
Dr. ssa Olga Brontesi
Dr. Geol. Alessandro Ferrari
Dr. ssa Geol. Melinda Raimondo


Legenda


 Confine comunale


 Aree oggetto di Microzonazione Sismica

Zone stabili suscettibili di amplificazioni locali

 FA-SA 0,1-0,5 s = 1,1 - 1,2

 FA-SA 0,1-0,5 s = 1,3 - 1,4

 FA-SA 0,1-0,5 s = 1,5 - 1,6

 FA-SA 0,1-0,5 s = 1,7 - 1,8

